

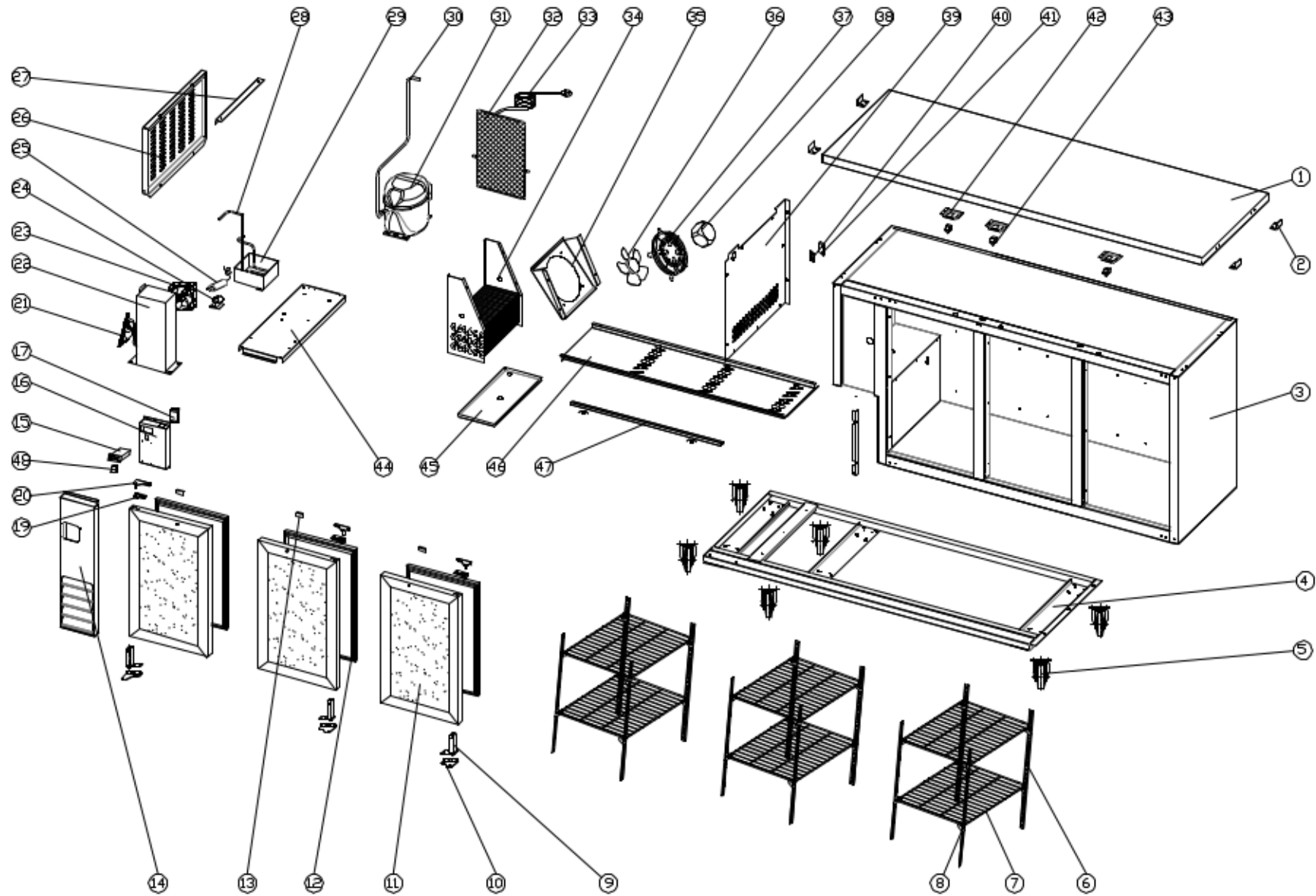
**PARTS EXPLODED VIEW: HC-VP72G**

For parts or additional information call support @ 1-813-502-0300



Email: [info@valpromail.com](mailto:info@valpromail.com)

Web: <http://valprorefrigeration.com>



## SPARE PARTS LIST OF: HC-VP72G

NO.	CODE	NAME	MODEL	QUY.	MATERIAL	REMARK
01	BC4-24.01	TOP		1PC		
02	BC2-24.02	TOP FIXED CLIP		4PCS	ZINC	
03	BC4-24.03	BODY		1PC		
04	BC4-24.04	SUPPORT OF BODY		1PC	COATED STEEL	
05	GN650TN.53	WHEEL	4"	1SET		
06	BC2-24.05	SHELF SUPPORT		8PCS	STAINLESS	1Cr18Ni9Ti
07	BC4-24.06	SHELF		6PCS		
08	G350.08	K SHAPE CLIP		24PCS	STAINLESS	
09	GN650TN.14	DOOR SPRING HINGE		3PCS		
10	GN2100TN.12	DOOR HINGE/LEFT/RIGHT		3PCS	STAINLESS	
11	BC2-24G.11L	GLASS DOOR/LEFT		1PC		
	BC2-24G.11R	GLASS DOOR/RIGHT		2PCS		
12	BC2-24G.47	GASKET		3PCS		
13	GN2100TN.86	LOCK HOOK		3PCS	STAINLESS	
14	BC2-24.12	FRONT PANEL		1PC	COATED STEEL	
15	27R.10	THERMOSTAT	XR20C(115V)	1PC		
16	BC2-24.17	ELECTRICAL EQUIPMENT FIXER		1PC	ZINC	
17	BC2-24.07	LED POWER SUPPLY	12V 6W	1PC		
19	GN650TN.10	DOWN HINGE AXIS JACKET		1PC	PLASTIC	
20	TPP44.29	DOOR HINGE		1PAIR		
21	BC2-24.08	CAPILLARY	1.4×3000	1PC		
22	BC2-24.24	CONDENSER		1PC		
23	BC2-24.09	CONDENSER FAN	1725 115V	1PC		
24	27F.06	FILTER DRIER FIXER		1PC		
25	GN1410TN.14	FILTER DRIER		1PC		

26	BC2-24.10	UNIT ROOM COVER		1PC		
27	BC2-24.13	UNIT ROOM COVER FIXER		1PC		
28	BC2-24.29	DISCHARGE PIPE		1PC	COPPER	
29	BC2-24.30	WATER BOX		1PC	STEEL	
30	BC2-24.31	SUCTION PIPE	Φ8	1PC	COPPER	
31	HC-B95A.01	COMPRESSOR	NUG45LR	1PC		
32	BC2-24.33	UNIT ROOM GRILL		1PC		
33	27R.14	PLUG	14# 1-15P	1PC		
34	BC2-24.37	EVAPORATOR		1PC		
36	BC4-24.36	FAN SUPPORT		1PC		
36	BC2-24.16	EVAPORATOR FAN BLADE	V200-34°	1PC		
37	GN140TN.04	EVAPORATOR FAN GRILL	GN140BTA	1PC		
38	HGD-23R.12	EVAPORATOR FAN MOTOR	7108	1PC		
39	BC2-24.40	EVAPORATOR COVER		1PC	STAINLESS	
40	GN650TN.17	PROBE PADDING		1PC		
41	S900.31	SENSOR FIXED CLIP		1PC		
42	D432.70	DOOR SWITCH BOX	ABS	2PC		
43	GN650TN.48	DOOR SWITCH		2PCS		
44	BC2-24.21	UNIT BOARD		1PC	ZINC	
45	BC2-24.14	EVAPORATOR WATER PAN		1PC	STAINLESS	
46	BC4-24.41	AIR FLOW CONDUCT BOARD		1PC	STAINLESS	
47	BC4-24.44	LAMP		1PC		
48	S900.01	LIGHT SWITCH		1PC		