

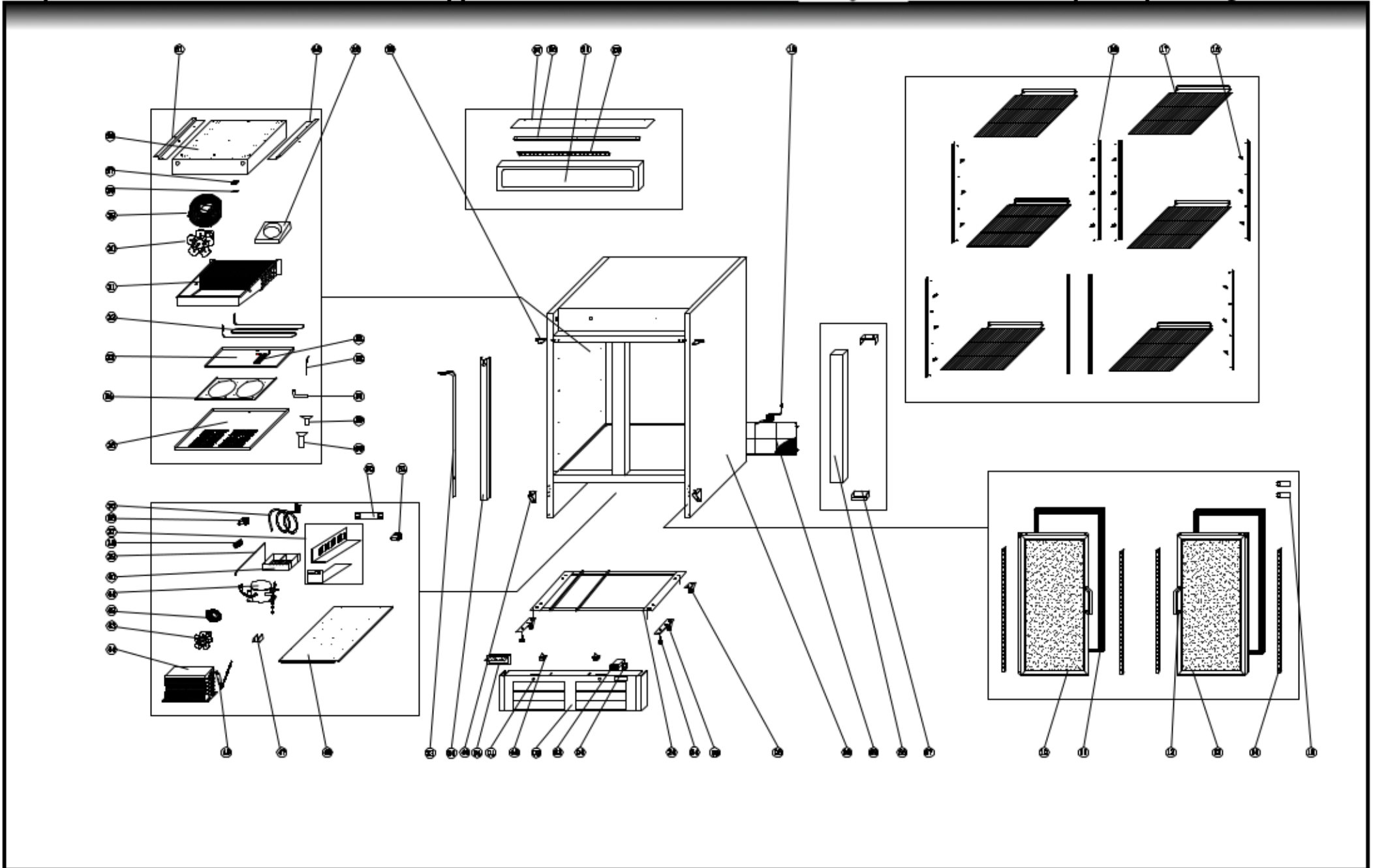
PARTS EXPLODED VIEW: VP2F-48FDV

For parts or additional information call support @ 1-813-502-0300



Email: info@valpromail.com

Web: <http://valprorefrigeration.com>



SPARE PARTS LIST OF: VP2F-48FDV

| NØ. | CODE | NAME | MODEL | QTY. | REMARK |
|-----|---------------------|--|-----------------|-------------|--------|
| 01 | GN650TN.86 | LOCK | | 2PCS | |
| 02 | EHGD-48R.01 | FRONT PANEL | | 1PC | |
| 03 | 27F.11 | THERMOSTAT | XR60C 115V | 1PC | |
| 04 | S900.01 | MAIN SWITCH | DRH-2415-3 | 1PC | |
| 05 | HGD-12R.02 | FRONT WHEEL | | 2PCS | |
| 06 | HGD-12R.03 | BACK WHEEL | | 2PCS | |
| 08 | HGD-48F.01 | BODY | | 1PC | |
| 09 | D930.15 | UNIT ROOM COVER | | 1PC | |
| 10 | EHGD-48F.01 | LEFT DOOR | | 1PC | |
| 11 | HGD-23R.15 | GASKET | | 2PCS | |
| 12 | U-GNM2100TN.17 | GLASS DOOR HANDLE | | 2PCS | |
| 13 | EHGD-23F.03 | RIGHT DOOR | | 1PC | |
| 14 | EHGD-16R.03L | LED STRIP(LEFT) | | 2PC | |
| | EHGD-16R.03R | LED STRIP(RIGHT) | | 2PC | |
| 15 | HGD-48F.03 | CAPACITOR OF DOOR | | 2PCS | |
| 16 | G350.08 | K SHAPE CLIP | | 32PCS | |
| 17 | HGD-48R.19 | SHELF | | 8PCS | |
| 18 | G350.06N | SHELF SUPPORT | L=1097.5 | 8PCS | |
| 19 | 27R.14 | PLUG | 12# | 1PC | |
| 20 | EHGD-48R.02 | LED LAMP | | 1PC | |
| 21 | HGD-48R.03 | LAMP COVER | | 1PC | |
| 22 | EHGD-23R.04 | WIND GUIDE FOAM | | 1PC | |
| 23 | 54F.07 | VERTICAL SUCTION PIPE+CAPILLARY A | | 1PC | |
| 24 | HGD-48F.05 | SUPPORT OF UNIT BOARD | | 1PC | |
| 25 | D420.08 | DOOR UP HINGE | | 1PAIR | |

| | | | | | |
|----|-------------|--------------------------------|----------------|------|--|
| 26 | HGD-48R.04 | FIXED BOARD OF EVAPORATOR | | 1PC | |
| 27 | GN650TN.17 | PROBE PADDING | | 1PC | |
| 28 | S900.31 | SENSOR FIXED CLIP | | 1PC | |
| 29 | GN650TN.23 | WALL RING | | 1PC | |
| 30 | HGD-23R.12 | CIRCLE FAN | ECM7108 | 1PC | |
| 31 | E54F.01 | EVAPORATOR | | 1PC | |
| 32 | E54F.02 | DEFROST HEATING ELEMENT | | 1PC | |
| 33 | 54F.04 | EVAPORATOR WATER PAN | | 1PC | |
| 34 | 81R.12 | CIRCLE FAN SUPPORT | | 1PC | |
| 35 | HGD-48R.23 | CIRCLE FAN COVER | | 1PC | |
| 36 | HGD-48F.12 | HELIX SUCTION PIPE+CAPILLARY B | | 1PC | |
| 37 | HGD-23F.04 | JUNCTION BOX | | 1PC | |
| 38 | 27R.15 | CABLE CONNECTOR | | 1PC | |
| 39 | HGD-48F.09 | DISCHARGE PIPE | Φ8*0.75 | 1PC | |
| 40 | 27R.100 | WATER BOX | | 1PC | |
| 41 | 54F.06 | COMPRESSOR | SC18CLX.2 220V | 1PC | |
| 42 | GN650BT.10 | BASKETC GUARD GRILLS | | 1PC | |
| 43 | 27R.32 | CONDENSER FAN | CA27-04 | 1PC | |
| 44 | E54F.03 | CONDENSER | | 1PC | |
| 45 | GN1410TN.14 | FILTER DRIER | 25g | 1PC | |
| 47 | 27F.06 | DRIER SUPPORT | | 1PC | |
| 48 | HGD-48F.05 | UNIT BOARD | | 1PC | |
| 49 | HGD-12R.15 | DOOR HINGE /DOWN | | 2PCS | |
| 50 | HGD-12F.08 | LED SUPPLIER | | 1PC | |
| 51 | D420.40 | WATER PIPE | | 1PC | |
| 52 | 27F.13 | PROTECTOR FOR HEATING ELEMENT | | 1PC | |
| 53 | 27F.10 | HEATER OF DRAIN PIPE | | 1PC | |

| | | | | | |
|----|-------------|------------------------------|-------------|------|--|
| 54 | HGD-12R.23 | FEET | | 2PC | |
| 55 | 27F.03 | CONTACTOR OF COMPRESSOR | HLC-1XT04XA | 2PCS | |
| 56 | HGD-48R.16 | SUPPORT OF LAMP COVER | | 1PC | |
| 57 | HGD-48R.17 | LAMP COVER PROTECTOR | | 1PC | |
| 58 | 27R.17 | SUCTION PIPE COVER | | 1PC | |
| 59 | D420D.13 | DRAIN PIPE (A) | | 1PC | |
| 60 | D420D.14 | DRAIN PIPE (B) | | 1PC | |
| 61 | HGD-23R.21 | SUPPORT OF EVAPORATOR(LEFT) | | 1PC | |
| 62 | HGD-23R.20 | SUPPORT OF EVAPORATOR(RIGHT) | | 1PC | |
| 63 | 27F.100 | CONTACTOR OF SWITCH | HLC-1XT04GG | 1PC | |
| 64 | HGD-12R.100 | THERMOSTAT COVER | | 1PC | |
| 65 | GN650TN.48 | DOOR SWITCH | | 2PCS | |
| 66 | HGD-48F.11 | MIDDLE GIRDER | | 1PC | |
| 67 | 56F.10 | MIDDLE GIRDER FIXER | | 2PCS | |