

**VALPRO COMMERCIAL REFRIGERATION**

203 Kelsey Ln., Building G

Tampa, FL 33619

813-502-0300

Toll Free 1-888-VALPRO-8

www.ValproRefrigeration.com

sales@ValproRefrigeration.com

PROJECT:

MODEL #:

ITEM #:

QTY:

AVAILABLE W/H:

APPROVAL:

GLASS DOOR MERCHANDISERMODEL: VP2F-48FDVHC DOUBLE VOLTAGE
SWING DOOR FREEZER

Our line of merchandisers utilize reliable energy efficient technology and provide an attractive well illuminated point of purchase while maintaining precise temperatures. This model will provide many years of worry free service and delivers cost saving eco-friendly energy efficiency. This unit utilizes natural hydrocarbon R290 refrigerant as an environmentally responsible choice. All our merchandisers are Energy Verified and deliver the lowest operating costs. All Valpro products are manufactured under strict ISO9001 standards for quality assurance, and to consistently deliver to our customers products that satisfy all expectations. All our products are operated, extensively monitored, and undergo rigorous inspection prior to packaging and shipping.

FEATURES

- Energy saving vacuum-insulated triple pane low E-glass doors
- Bright LED full door length internal cabinet lighting
- Bright LED back-lit front panel
- Standard door locks for added security
- Self-closing doors
- Snap-in magnetic door gaskets removable and replaceable without tools for ease of cleaning
- White baked enamel steel exterior, with white baked enamel aluminum interior and 304 stainless steel floor
- Eight heavy duty wire shelves supported by pilasters for easy adjustability, 1/2" increments
- Four 1" wheels with front leg levelers
- High density foamed in-place CFC free polyurethane insulation
- Front mounted electronic thermostat digitally controlled temperature system maintains optimum temperature with easily viewed LED display
- Removable bottom grill slide-out condensing unit for easy maintenance
- Automatic defrost and condensate evaporation system
- Double voltage 115/208-230/60Hz/1
- Energy Verified efficiency & ETL sanitary certified.

**WARRANTY**
2 YEAR Parts & Labor
5 YEAR Compressor* Compressor warranty 2 year parts & labor / 3 additional year warranty compressor part only



Model:
VP2F-48FDVHC

Double Voltage Glass Door Merchandiser Freezer

Two Section - Swing Door - 48 cu. ft. Capacity

Technical Data

Dimensional Data

Exterior Dimensions	54"W x 31.9"D x 79.5"H
Interior Dimensions	50.2"W x 30"D x 55.5"H
Net Storage Capacity	48 cu. ft.
Net Weight	476 lbs.
Crated Weight	566 lbs.
Shipping Dimensions	55.5"W x 34.8"D x 84.6"H

Refrigeration Data

Temperature Range	-10°F to +10°F
Refrigerant	R-290
Refrigerating System	Capillary Tube
Temperature Controller	Digital
Horsepower	1

Construction Data

Exterior Material	White Baked Enamel Steel
Interior Floor Material	304 Series Stainless Steel
Interior Wall Material	White Baked Enamel Aluminum
Insulation	CFC Free Polyurethane
Shelves	8 Heavy Duty Epoxy Coated

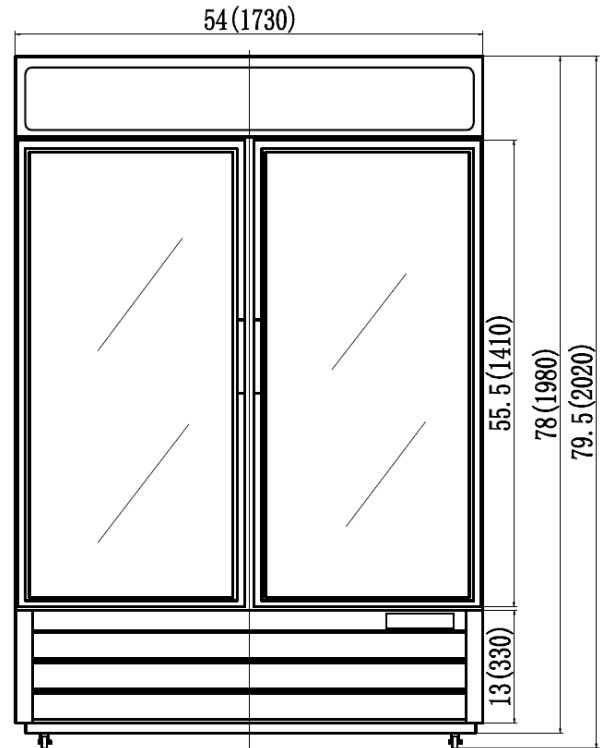
Electrical Data

Amps	6.5
Voltage/Frequency/Phase	115V/208-230V/60Hz/1
Plug Type	NEMA L14-20P
Electrical Cord Length	8 ft.

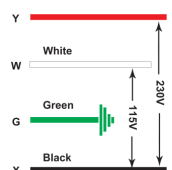
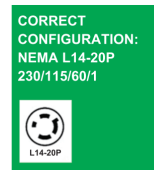
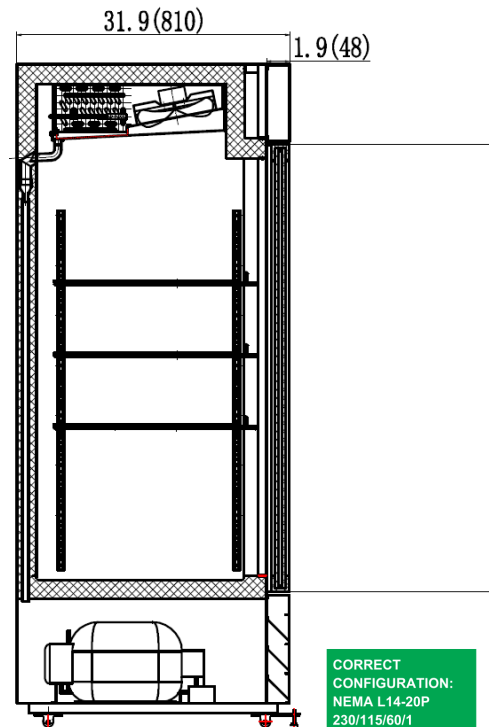


Specifications contained in this sheet are subject to change without notice. This equipment is intended for storage and display of packaged products only and for use in ambient temperatures not exceeding 86°F.

FRONT VIEW



SIDE VIEW



Valpro Commercial Refrigeration
203 Kelsey Ln., Building G
Tampa, FL 33619



Tel: 813-502-0300
1-888-VALPRO-8
www.valprorefrigeration.com